

SHEET 1 OF 4

Sketch Showing the Typical Integrated Cross Section of ERS Height IR Chainage at 210/300 to 216/900 (BSRP Chainage at 4+700 to 11+200) for Corridor-C2

Legend :

Completed

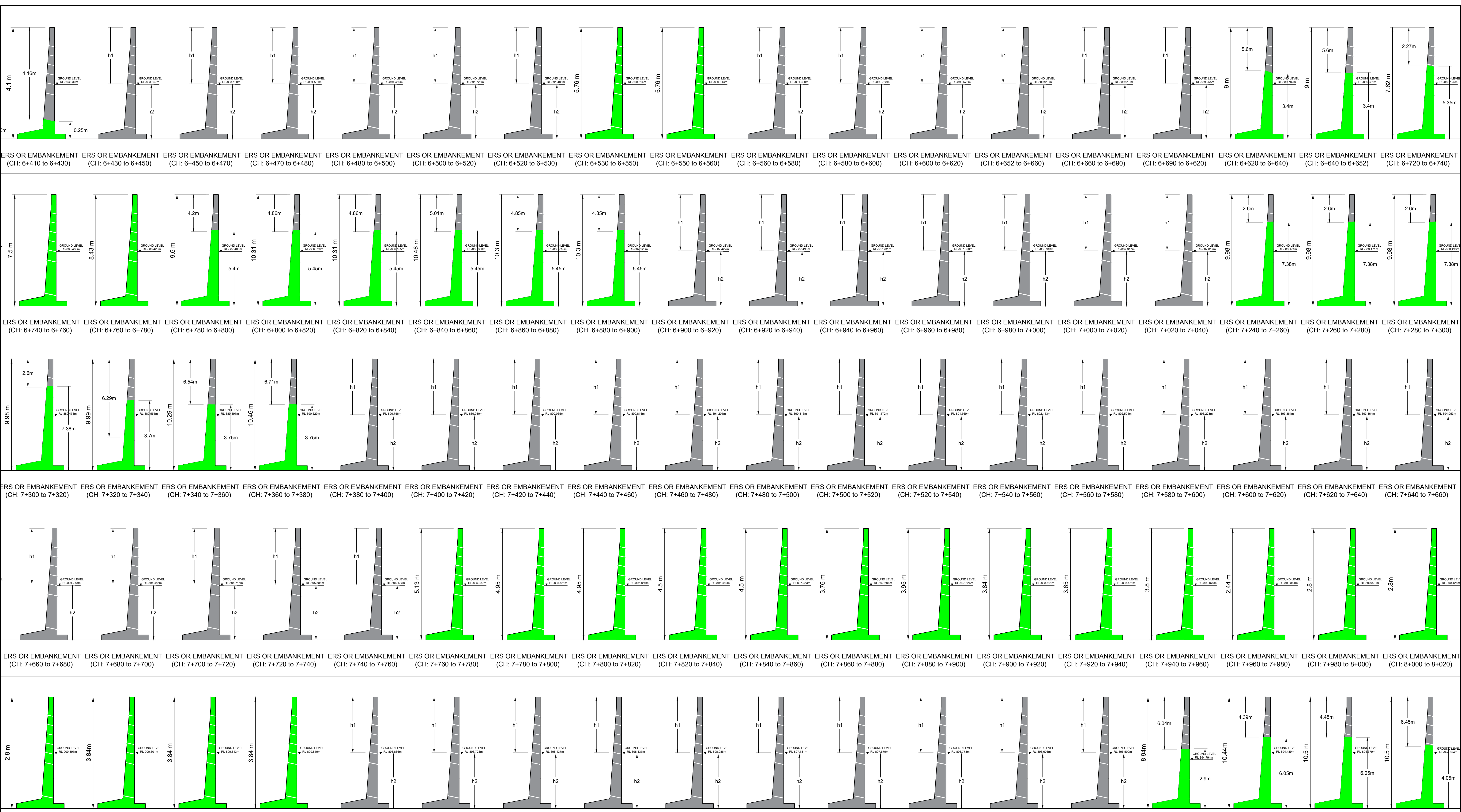
incompleted

FOR GC

FOR KRIDE/GC

Sign :					
NAME	Mr.Shiraz Narwaz	Mr.Rama Koteshwara Rao	Mr.T.N Babu	Mr.Kesavan	Mr. Girish MR
DESIGNATION	SE /GC	RE-01 /GC	CRE /GC	DGM /KRIDE	GM/KRIDE
	REVIEWED BY	REVIEWED BY	REVIEWED BY	REVIEWED BY	REVIEWED BY

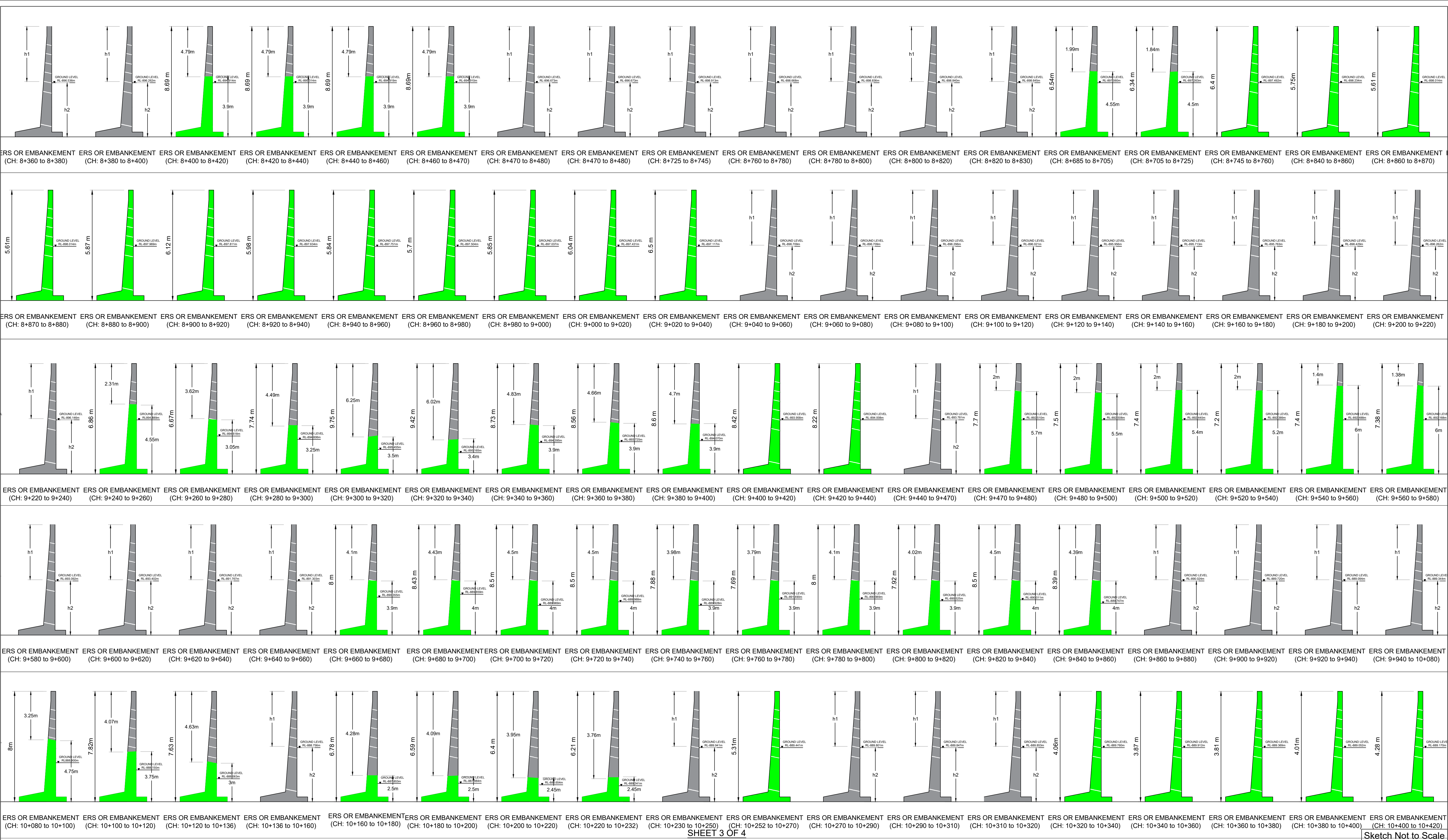
Sketch Not to Scale



ERS OR EMBANKMENT (CH: 8+020 to 8+040)		ERS OR EMBANKMENT (CH: 8+040 to 8+060)	ERS OR EMBANKMENT (CH: 8+060 to 8+080)	ERS OR EMBANKMENT (CH: 8+080 to 8+100)	ERS OR EMBANKMENT (CH: 8+100 to 8+120)	ERS OR EMBANKMENT (CH: 8+120 to 8+140)	ERS OR EMBANKMENT (CH: 8+140 to 8+160)	ERS OR EMBANKMENT (CH: 8+140 to 8+160)	ERS OR EMBANKMENT (CH: 8+160 to 8+180)	ERS OR EMBANKMENT (CH: 8+180 to 8+200)	ERS OR EMBANKMENT (CH: 8+200 to 8+220)	ERS OR EMBANKMENT (CH: 8+220 to 8+240)	ERS OR EMBANKMENT (CH: 8+240 to 8+260)	ERS OR EMBANKMENT (CH: 8+260 to 8+280)	ERS OR EMBANKMENT (CH: 8+280 to 8+300)	ERS OR EMBANKMENT (CH: 8+300 to 8+320)	ERS OR EMBANKMENT (CH: 8+320 to 8+340)	ERS OR EMBANKMENT (CH: 8+340 to 8+360)
Legend :		Completed		incompleted		Sketch Not to Scale												

Sketch Showing the Typical Integrated Cross Section of ERS Height IR Chainage at 210/300 to 216/900 (BSRP Chainage at 4+700 to 11+200) for Corridor-C2

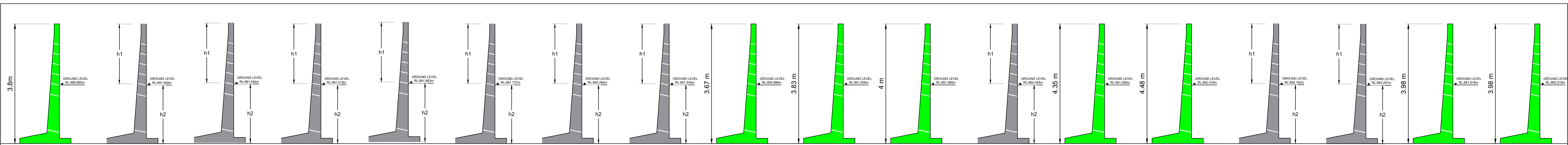
		FOR GC			FOR KRIDE/GC	
Sign :						
NAME	Mr.Shiraz Narwaz	Mr.Rama Koteswara Rao	Mr.T.N Babu	Mr.Kesavan	Mr. Girish MR	
DESIGNATION	SE /GC	RE-01 /GC	CRE /GC	DGM /KRIDE	GM/KRIDE	
REVIEWED BY		REVIEWED BY	REVIEWED BY	REVIEWED BY	REVIEWED BY	



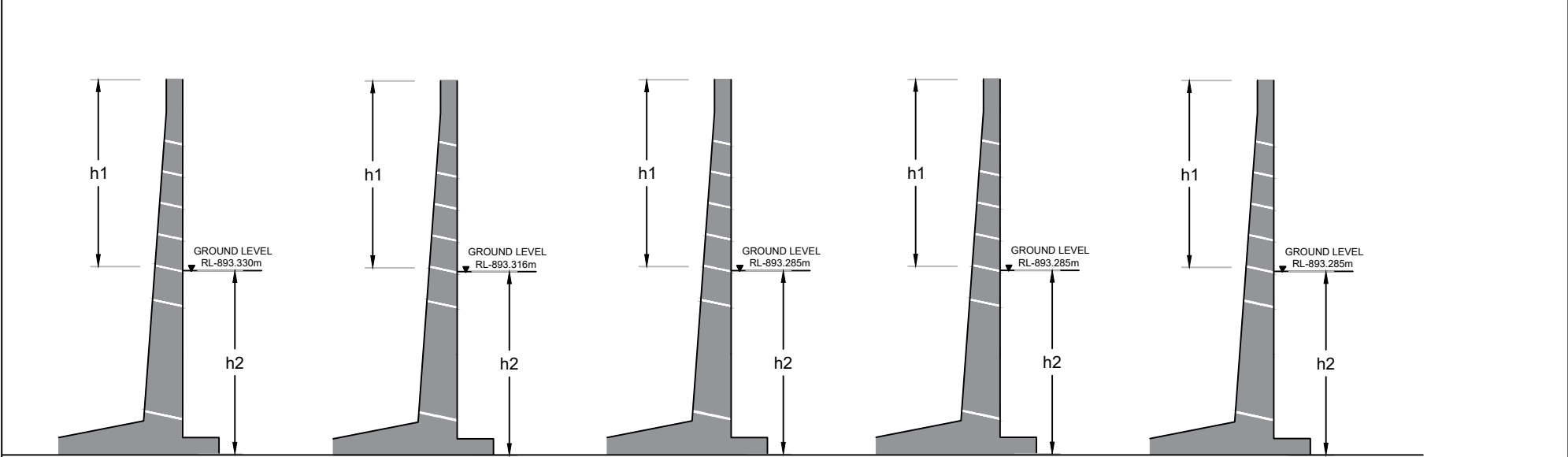
SHEET 3 OF 4					
Sketch Not to Scale					
FOR GC		FOR KRIDE/GC			
Sign :					
NAME	Mr.Shiraz Narwaz	Mr.Rama Koteshwara Rao	Mr.T.N Babu	Mr.Kesavan	Mr. Girish MR
DESIGNATION	SE /GC	RE-01 /GC	CRE /GC	DGM /KRIDE	GM/KRIDE
REVIEWED BY		REVIEWED BY	REVIEWED BY	REVIEWED BY	REVIEWED BY

Sketch Showing the Typical Integrated Cross Section of ERS Height IR Chainage at 210/300 to 216/900 (BSRP Chainage at 4+700 to 11+200) for Corridor-C2

Legend : Completed incompleted



ERS OR EMBANKMENT (CH: 10+420 to 10+440) ERS OR EMBANKMENT (CH: 10+440 to 10+460) ERS OR EMBANKMENT (CH: 10+460 to 10+480) ERS OR EMBANKMENT (CH: 10+480 to 10+500) ERS OR EMBANKMENT (CH: 10+500 to 10+520) ERS OR EMBANKMENT (CH: 10+520 to 10+540) ERS OR EMBANKMENT (CH: 10+540 to 10+560) ERS OR EMBANKMENT (CH: 10+560 to 10+580) ERS OR EMBANKMENT (CH: 10+580 to 10+600) ERS OR EMBANKMENT (CH: 10+600 to 10+620) ERS OR EMBANKMENT (CH: 10+620 to 10+630) ERS OR EMBANKMENT (CH: 10+630 to 10+650) ERS OR EMBANKMENT (CH: 10+650 to 10+660) ERS OR EMBANKMENT (CH: 10+660 to 10+670) ERS OR EMBANKMENT (CH: 10+670 to 10+690) ERS OR EMBANKMENT (CH: 10+690 to 10+700) ERS OR EMBANKMENT (CH: 10+700 to 10+720) ERS OR EMBANKMENT (CH: 10+720 to 10+740)



ERS OR EMBANKMENT (CH: 10+740 to 10+760) ERS OR EMBANKMENT (CH: 10+760 to 10+780) ERS OR EMBANKMENT (CH: 10+780 to 10+800) ERS OR EMBANKMENT (CH: 10+800 to 10+820) ERS OR EMBANKMENT (CH: 10+820 to 10+830)

Sketch Showing the Typical Integrated Cross Section of ERS Height IR Chainage at 210/300 to 216/900 (BSRP Chainage at 4+700 to 11+200) for Corridor-C2

Legend :	Completed					incompleted				

	FOR GC			FOR KRIDE/GC	
	NAME	Mr.Shiraz Narwaz	Mr.Rama Koteshwara Rao	Mr.T.N Babu	Mr.Kesavan
DESIGNATION	SE /GC	RE-01 /GC	CRE /GC	DGM /KRIDE	GM/KRIDE
	REVIEWED BY	REVIEWED BY	REVIEWED BY	REVIEWED BY	REVIEWED BY